


Powering on the device



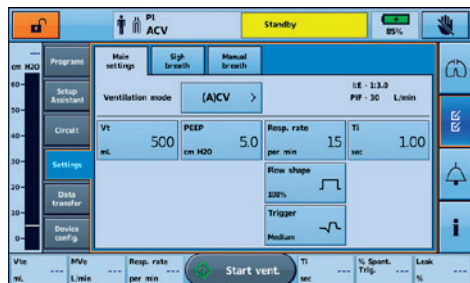
To power on the device, simply press the green power on/off switch  at the back of the device. The device will perform a system check.

On completion of the system check, the Patient Home screen and active program is displayed.

If more than one program displays, the active program will be highlighted orange.


Note: Settings configured in the active program will be used when ventilation is started.

Accessing Clinical mode




To access Clinical mode:

Clinical mode can be accessed from any screen, whether or not the Astral device is ventilating.

1. From the patient home screen, press and hold  for 3 seconds.
2. Select 20 minutes or Unlimited. The padlock is unlocked and the Main Settings screen is displayed.

To exit Clinical mode:

1. Press . The Exit Clinical Mode screen is displayed.
2. Press **Confirm**. The padlock is locked and the Patient Home screen is displayed.

Note: If you do not make a selection within 7 seconds, the device returns to the previous screen.

Navigating the menus



Monitors



Waveforms The Waveforms screen displays the last 15 seconds of patient airway pressure and flow in a graph. The graph updates in real-time.

Monitoring The Monitoring screen displays all measured parameters in numerical form.

Trends



Setup



Programs*

Setup Assistant*

Circuit

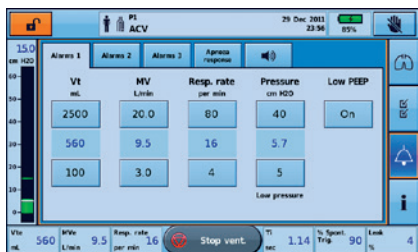
Settings Main Settings
Manual Breath

Data Transfer Transfer Data
Import / Export

Device Config. Display
Date / Time
Units / Option
Reset



Alarms



Alarms 1 Tidal Volume (Vt)
Minute Ventilation (MV)
Respiratory Rate
Pressure
Low PEEP

Alarms 2 Ventilation Stop
Leak
Non-vented Mask (NV Mask)

Alarms 3 FiO₂
SpO₂
Pulse

Apnoea Response Apnea Response
Apnea Definition

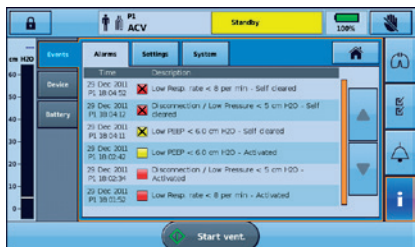
Alarm Volume Alarm Level
Alarm Test

Events Alarms
Settings
System

Device Information



Information



*Available in Clinical mode only